

342 Ennis to Flagmount via Scariff and Feakle

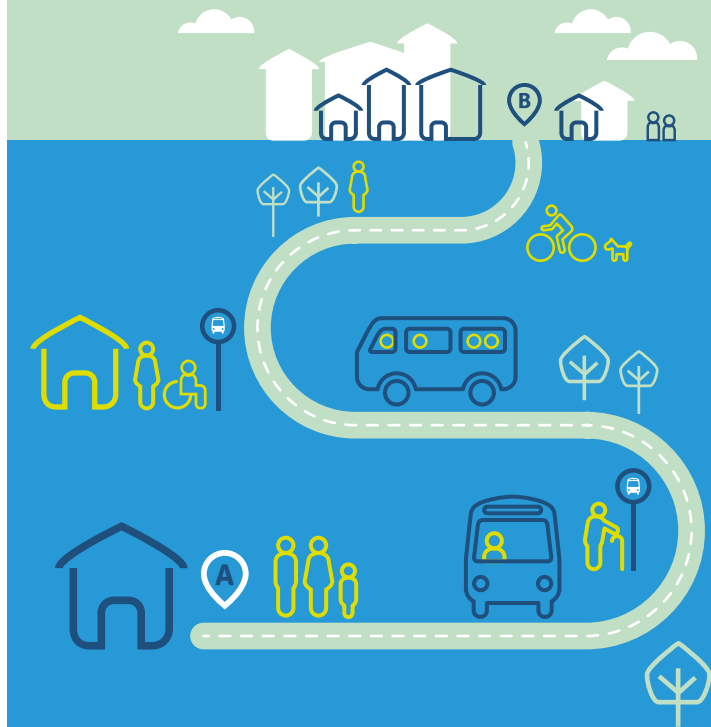
Days: Monday to Sunday (Daily)

Ennis to Flagmount via Scariff & Feakle

Returns	Stops	Time		
Ennis	Bus & Train Station	09:45	14:02	18:15
Ennis	Friars Walk Bus Stop Clare Museum	09:49	14:06	18:19
Ennis	Opposite Entrance Castlerock Estate	09:54	14:11	18:24
Ennis	Near Entrance to Knockaderry Grove (Tulla side)	09:56	14:13	18:26
Ennis	Near Entrance to Western Joinery	09:58	14:15	18:28
Ennis	Near Entrance to An tSean Dún (Tulla side)	10:00	14:17	18:30
Ennis	Near Entrance to Four Seasons Drive (Tulla side)	10:02	14:19	18:32
Ennis	Near Entrance Gort na mBlath (Tulla side)	10:04	14:21	18:34
Clooney	Opposite The Church	10:11	14:28	18:41
Tulla	O'Halloran's Service Station	10:20	14:37	18:50
Tulla	Library	10:23	14:40	18:53
Bodyke	The Cobblers Rest	10:37	14:54	19:07
Tuamgraney	Opposite Woollen Mills for LCETB	10:43	15:00	19:13
Scariff	Post Office Main Street	10:48	15:05	19:18
Feakle	Opposite Pepper's Pub	11:00	15:17	19:30
Feakle	Near Johnny Patterson Monument	11:02	15:19	19:32
Feakle	Digital Hub/Old Creamery	11:04	15:21	19:34
Flagmount	Opposite O'Mara's General Store	11:18	15:35	19:48

Route 342

Flagmount to Ennis
via Feakle and Scariff



local link
Limerick Clare

Timetable

342 Flagmount to Ennis via Feakle and Scariff

Days: Monday to Sunday (Daily)





Flagmount to Ennis via Feakle and Scariff				
Departs	Stops	Time		
Flagmount	<i>O'Mara's General Store</i>	07:55	12:00	16:00
Feakle	<i>Near Johnny Patterson Monument</i>	08:15	12:20	16:20
Feakle	<i>Digital Hub/Old Creamery</i>	08:18	12:23	16:23
Feakle	<i>Pepper's Pub</i>	08:19	12:24	16:24
Scariff	<i>The Square</i>	08:32	12:37	16:37
Tuamgraney	<i>Nilands 24-7</i>	08:35	12:40	16:40
Tuamgraney	<i>Woollen Mills for LCETB</i>	08:36	12:41	16:41
Bodyke	<i>Opposite the Cobblers Rest</i>	08:43	12:48	16:48
Tulla	<i>Opposite Library</i>	08:57	13:02	17:02
Tulla	<i>Opposite O'Halloran's Service Station</i>	09:01	13:06	17:06
Clooney	<i>The Church</i>	09:11	13:16	17:16
Ennis	<i>Near Entrance Opposite Gort na mBláth (Ennis side)</i>	09:18	13:23	17:23
Ennis	<i>Near Curate's Court Estate Entrance (Tulla side)</i>	09:20	13:25	17:25
Ennis	<i>Opposite An tSean Dún (Tulla side)</i>	09:22	13:27	17:27
Ennis	<i>Opposite Entrance to Western Joinery</i>	09:24	13:29	17:29
Ennis	<i>Near Cappahard Cottage</i>	09:26	13:31	17:31
Ennis	<i>Opposite Entrance to Clover Hill</i>	09:28	13:33	17:33
Ennis	<i>Friars Walk Bus Stop Clare Museum</i>	09:35	13:40	17:40
Ennis	<i>Bus & Train Station</i>	09:39	13:44	17:44

For more information



For online information please visit locallink.ie

Email us at limerickclare@locallink.ie

-  TFI Local Link Limerick Clare
-  @locallinkie
-  TFI Local Link Limerick Clare
-  TFI Local Link Limerick Clare



Call us at **065 671 9101**
or for text bookings **087 937 4148**



Ask your driver or other staff member for assistance



Operated By
TFI Local Link Limerick Clare
Ground Floor
1 Market place
Newcastle West
Co. Limerick
V42 A898

Ennis Digital Hub
Quin Road Business Park
Quin Road
Ennis
Co. Clare
V95 VW74



Our vehicles are wheelchair accessible



Fares

Fares are subject to change and vary depending on service. Go to www.locallink.ie to see fares for these services.



You can now use the TFI Leap Card to pay for your ticket.



Leap
Top-Up app



TFI Go
app



TFI Live
app

Services do operate on Public Holidays

Information correct at time of print (August 2023)