

## 318 Limerick to Ennis via Broadford, Quin

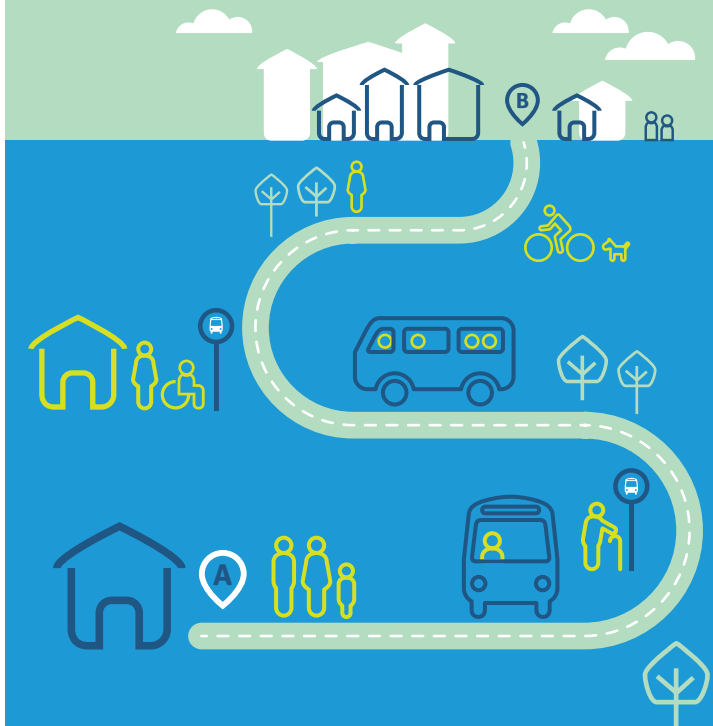
Days: Monday to Sunday (Daily)

### Limerick to Ennis via Broadford, Quin

Returns	Stops	Time			
Limerick	Hyde Road P.O. stop for Colbert Train Station	07:05	11:45	16:15	19:51
Limerick	Arthurs Quay	07:12	11:52	16:22	19:58
Ardnacrusha	Blackwater Cross	07:22	12:02	16:32	20:08
Broadford	GAA Club Entrance	07:35	12:15	16:45	20:21
O'Callaghan's Mills	St. Patrick's Church	07:43	12:23	16:53	20:29
O'Callaghan's Mills	Campbell Court Cross (after bridge)	07:45	12:25	16:55	20:31
Kilkishen	Gleeson's Bar	07:57	12:37	17:07	20:43
Kilkishen	Hill Crest Grove Estate	07:59	12:39	17:09	20:45
Quin	Entrance to Knappogue Castle	08:09	12:49	17:19	-
Quin	Opposite Malachy's Bar/Danganbrack	08:15	12:55	17:25	20:56
Quin	The Monk's Well Pub	08:17	12:57	17:27	-
Doora	St. Joseph's Doora Barefield GAA, Gurteen	08:25	13:05	17:35	-
Ennis	Lay-By near entrance to Bruach Na h'Abhainn (Ennis side)	08:31	13:11	17:41	-
Ennis	Quin Road Business Park (Near Entrance Opposite NCT)	08:33	13:13	17:43	-
Ennis	Bus and Train Station	08:35	13:15	17:45	-
Ennis	Friar's Walk Bus Stop Clare Museum	08:37	13:17	17:47	-

## Route 318

Ennis to Limerick  
via Quin & Broadford



**local link**  
Limerick Clare

# Timetable

## 318 Ennis to Limerick via Quin & Broadford

Days: Monday to Sunday (Daily)

Ennis to Limerick via Quin & Broadford					
Departs	Stops		Time		
Ennis	<i>Friar's Walk Bus Stop Clare Museum</i>	-	09:00	13:30	18:10
Ennis	<i>Bus and Train Station</i>	-	09:04	13:34	18:14
Ennis	<i>Near First Mart Entrance for Quin Rd. Bus. Park (Ennis side)</i>	-	09:07	13:37	18:17
Ennis	<i>Near Entrance to Fr. McNamara Park (Ennis side)</i>	-	09:09	13:39	18:19
Doora	<i>St. Joseph's Doora Barefield GAA, Gurteen</i>	-	09:15	13:45	18:25
Quin	<i>Opposite The Monk's Well Pub</i>	-	09:22	13:52	18:32
Quin	<i>Malachy's Bar/Danganbrack</i>	06:05	09:24	13:54	18:34
Quin	<i>Entrance to Knappogue Castle</i>	-	09:30	14:00	18:40
Kilkishen	<i>Opposite entrance to Hill Crest Grove Estate</i>	-	09:40	14:10	18:50
Kilkishen	<i>Opposite Gleeson's Bar</i>	06:16	09:42	14:12	18:52
O'Callaghan's Mills	<i>Opposite Campbell Court Cross (before bridge)</i>	06:28	09:56	14:26	19:06
O'Callaghan's Mills	<i>Opposite St. Patrick's Church</i>	06:30	09:59	14:29	19:09
Broadford	<i>National School</i>	06:37	10:07	14:37	19:17
Ardnacrusha	<i>Blackwater Cross</i>	06:50	10:21	14:51	19:31
Limerick	<i>Hyde Road P.O. stop for Colbert Train Station</i>	07:05	10:41	15:11	19:51
Limerick	<i>Arthurs Quay</i>	07:12	10:48	15:18	19:58





Please note all times are approximate and subject to change

## For more information



For online information please visit [locallinkclare.ie](http://locallinkclare.ie)

Email us at [limerickclare@locallink.ie](mailto:limerickclare@locallink.ie)

-  TFI Local Link Limerick Clare
-  @locallinkclare
-  TFI Local Link Limerick Clare
-  TFI Local Link Limerick Clare



Call us at **065 671 9101**  
or for text bookings **087 937 4148**



Ask your driver or other staff member for assistance



Operated By  
**TFI Local Link Limerick Clare**  
**Ground Floor**  
**1 Market place**  
**Newcastle West**  
**Co. Limerick**  
**V42 A898**

**Ennis Digital Hub**  
**Quin Road Business Park**  
**Quin Road**  
**Ennis**  
**Co. Clare**  
**V95 VW74**



Our vehicles are wheelchair accessible



### Fares

Fares are subject to change and vary depending on service. Go to [www.locallinkclare.ie](http://www.locallinkclare.ie) to see fares for these services.



**You can now use the TFI Leap Card to pay for your ticket.**



Leap  
Top-Up app



TFI Go  
app



TFI Live  
app

Services do operate on Public Holidays

Information correct at time of print (August 2023)